

**Formulation Design and Optimization of Novel Sustained Release Gastro-Retentive Floating Matrix Tablets of Ciprofloxacin HCl
By Experimental Design**

**Gourishyam Pasa^{1*}, Prasanta Kumar Choudhury², Uma Shankar Mishra³,
Ghanshyam Panigrahi⁴, Putta Rajesh Kumar⁵, Satyabrata Jena⁶.**

- 1) Professor, Department of Pharmaceutics, Royal College of Pharmacy and Health Sciences, Andhapasara Road, Berhampur, Ganjam, Pin: 760002, Odisha, India.
- 2) Professor, Department of Pharmaceutics, Royal College of Pharmacy and Health Sciences, Andhapasara Road, Berhampur, Ganjam, Pin: 760002, Odisha, India.
- 3) Professor-Cum-H.O.D Department of PA&QA, Royal College of Pharmacy and Health Sciences, Andhapasara Road, Berhampur, Ganjam, Pin: 760002, Odisha, India.
- 4) Professor, Department of Pharmacology, Royal College of Pharmacy and Health Sciences, Andhapasara Road, Berhampur, Ganjam, Pin: 760002, Odisha, India.
- 5) Professor and HOD, Department of Pharmaceutics, Joginapally BR Pharmacy College, Yenkapally, Moinabad, Hyderabad, 500075.
- 6) Associate Professor, Department of Pharmaceutics, Bhaskar Pharmacy College, Yenkapally, Moinabad, Hyderabad, 500075.

ABSTRACT

The main objective of this study was to formulate and optimize a novel gastro-retentive floating matrix tablet of Ciprofloxacin hydrochloride with the help of Design of Experiment by using HPMC K100M and Sodium Alginate each with three different levels with an approach to increase gastric residence and thereby improve drug bioavailability. Ciprofloxacin hydrochloride is a fluoroquinolone antibiotic drug which is used for the effective treatment of infections caused by susceptible organism. It is stable at the gastric pH (acidic 1.2) and possesses elimination half – life of 4 hours. It is soluble in acidic medium and thus a gastroretentive floating tablet of the drug would enhance the extent of absorption. Ciprofloxacin hydrochloride gastro-retentive tablets were formulated by direct compression

method using variable concentration of HPMC K100M and Sodium Alginate as as the retardant polymers and sodium bicarbonate as a gas generating agent. From FTIR results confirm the absence of chemical interaction between the drug with the excipients used in tablet formulations. Also, there was no shift in the endotherm of in the drug- excipients mixtures indicating compatibility of drug with all the excipients. The resulting formulation has been evaluated for weight variation, thickness, hardness, friability, drug content, floating lag time, floating duration time and in-vitro drug release for 12 hours. In this study it was found that all the formulations showed compliance with pharmacopeial standards. Floating lag times of all the formulations were within 1 minute and Total floating time of all the formulations were more than 12 hours. In vitro release studies revealed that the release rate decreased with increase polymer proportion of retarding polymers. Formulation CHA₇ (12% HPMC K₁₀₀M and 6% SA) released 21 % in 1 h, 56 % in 6 h, 96 % in 12 h, with a FLT of 1min, TFT up to 12 h. Hence, formulation CHA₇ was considered the best formulation with desirable floating parameters and In vitro drug release profile. From the Kinetic model it was found that the optimized formulation CHA₇ showed linearity in case of Zero order (R^2 : 0.934) and Higuchi model (R^2 : 0.959). By fitting data to Korsmeyer-Peppas model and 'n' value lying above 0.5 indicating non Fickian release.

Keywords: Ciprofloxacin hydrochloride, direct compression, gastroretentive floating tablets, Experimental design; HPMC K₁₀₀M; Sodium Alginate

INTRODUCTION

A major constraint in oral controlled drug delivery is that not all drug candidates are absorbed uniformly throughout the gastrointestinal tract (GIT), and some drugs are absorbed only in a particular portion of GIT or absorbed to a different extent in various segments of the GIT. Floating drug delivery systems are good promising options for drugs which show good absorption in the stomach and which are degraded, less efficient in the intestine^[1]. Gastro Retentive Drug Delivery System gets retained for longer period of time in stomach, thus helping in absorption of drug for the intended duration of time, which in turn improves bioavailability by reducing drug wastage, and improving solubility of drugs that are less soluble at high pH environment. It also helps in achieving local delivery of drug in the stomach and proximal small intestine.^[2] Floating drug delivery systems (FDDS) have a bulk

density less than gastric fluids and so remain buoyant in the stomach without affecting the gastric emptying rate for a prolonged period of time. While the system is floating on the gastric contents, the drug is released slowly at the desired rate from the system. After release of drug, the residual system is emptied from the stomach.^[3] Ciprofloxacin belonging to the family of quinolones (term refers to potent chemotherapeutic antibacterial agents). CPF is a broad-spectrum antibiotic active against both Gram-positive and Gram-negative bacteria. It functions by inhibiting DNA gyrase, a Type II topoisomerase and topoisomerase IV, enzymes necessary to separate bacterial DNA, thereby inhibiting cell division and also affects mammalian cell replication.^[4] It is used in the treatment of infections such as lower respiratory tract, urinary tract, bone and joint infections, hospital acquired infections, and diarrheal infections. Ciprofloxacin is a broad-spectrum antibiotic active against both Gram-positive and Gram-negative bacteria. It is absorbed completely (70%) after oral administration and having a biological half-life of 3.5 to 4.5 hrs.^[5] The drug should be administered twice a day. A rationale for developing Ciprofloxacin HCl as a gastro retentive dosage form, which is retained in the stomach for prolonged period of time and produces a constant input of drug to the absorption site. This improves bioavailability of the drug, reduces frequency of dosing, thus minimizing side effects.^[6] The aim of the present study is formulation design and optimization of oral floating matrix tablets of Ciprofloxacin HCl by using Experimental Design. The objective of the present study is to formulate the Ciprofloxacin HCl floating tablets using HPMC K₁₀₀M and Sodium Alginate as the retardant polymers by direct compression techniques.

MATERIALS AND METHODS

MATERIALS

Ciprofloxacin Hydrochloride was obtained as a gift sample from Dr Reddy's Lab (Hyderabad, India), HPMC K₁₀₀ and Sodium Alginate were obtained from Aurobindo Pharma Ltd, (Hyderabad, India), Micro Crystalline Cellulose and Mg. Stearate from Loba Chem (Mumbai, India). All other chemicals and ingredients were used for study are of commercial grade.

METHODS

Identification of drug

The drug was identified by Infrared spectroscopy (IR), melting point determination and Ultraviolet spectroscopy (UV).

Infrared Spectroscopy

Infrared (IR) spectra of received gift sample of drugs was performed in the range of 4000cm⁻¹ to 400cm⁻¹ by using FT-IR (DRS) technique (FT IR-Affinity-1 spectrophotometer (DRS-8000) SHIMADZU, Japan) and studied for the presence of characteristic peaks.

Ultraviolet Spectroscopy

The samples were subjected to UV Spectrophotometric analysis and were scanned for absorption maxima (λ_{max}) in the range of 200 to 400nm using UV-Visible Spectrophotometer in an appropriate medium and the same was compared with that of reference values in literature.

Drug-polymer compatibility study

It is well known that prior to the development of any dosage form with a new or old drug candidate, it is essential that certain fundamental physical and chemical properties of the drug molecule and other derived properties of the drug powder are determined. This information will dictate many of the subsequent events and possible approaches in formulation development. Hydrophilic polymers, as well as other excipients, contain reactive functional groups that may give rise to chemical and physical transformations. Thus, when studying new pharmaceutical formulations, it is important to verify the possibility of occurrence of incompatibilities between the components of the formulation.

Fourier-Transform Infrared Spectroscopy (DRS)

Fourier-transform infrared (DRS) spectra were obtained by using an FT IR-Affinity-1 spectrophotometer (DRS-8000) SHIMADZU, Japan. The pure drug samples (Ciprofloxacin) were previously ground and mixed thoroughly with potassium bromide, an infrared transparent matrix, at 1:1 (Sample: KBr) ratio, respectively. The KBr powder was used as blank for background correction in FT-IR (DRS) studies. Forty five scans were obtained at a resolution of 4 cm⁻¹, from 4000 to 400 cm⁻¹.

Differential scanning calorimetry

The DSC measurements were performed on a DSC-4000 (Seiko Instruments, Japan) differential scanning calorimeter with a thermal analyzer. All accurately weighed samples (about 2 mg of sample or its equivalent) were placed in sealed aluminum pans, before heating under nitrogen flow (20 ml/min) at a scanning rate of 10°C min⁻¹ from 50°C to 350°C. An empty aluminum pan was used as reference.

Experimental design ^[7]

Some possible experimental trials, generated by application of 3² factorial designs, were conducted to evaluate each independent factor at 3 levels. Formulation combinations (CHA₁ – CHA₉) using factorial design were shown in **Table 3 & 4**. The percentages of HPMC K₁₀₀M (X₁) and Sodium Alginate (X₂) were chosen as control variables while, Y₁ (Cumulative % of drug released at 1 hr), Y₆ (Cumulative % of drug released at 6 hr), Y₁₂ (Cumulative % of drug released at 12 hr) were selected as response variables by using Design Expert Software.

Pharmacokinetic model ^[8, 9, 10]

Zero order kinetics

Drug dissolution from pharmaceutical dosage forms that do not disaggregate and release the drug slowly (assuming that area does not change and no equilibrium conditions are obtained) can be represented by the following equation:

$$W_0 - W_t = K_0 t$$

Where W₀ is the initial amount of drug in the pharmaceutical dosage form, W_t is the amount of drug in the pharmaceutical dosage form at time t and k is proportionality constant. Dividing this equation by W₀ and simplifying: f_t = k₀t Where f_t = 1 - (W_t/ W₀) and f_t represents the fraction of drug dissolved in time t and k₀ the apparent dissolution rate constant or zero order release constant.

First order kinetics

This type of model to analyze drug dissolution study was first proposed by Gibaldi and Feldman and later by Wagner. The relation expressing this model:

$$\text{Log } Q_t = \text{Log } Q_0 + K_1 t / 2.303.$$

Where Q_t is the amount of drug released in time t, Q₀ is initial amount of drug in the solution and K₁ is the first order release rate constant.

Korsmeyer -Peppas model

Korsmeyer developed a simple semi empirical model, relating exponentially the drug release to the elapsed time (t). $Q_t/Q_\infty = K_k t^n$

Where K_k is a constant incorporating structural and geometric characteristic of the drug dosage form and n is the release exponent, indicative of the drug release mechanism.

Higuchi model

$Q_t = K_H t^{1/2}$ Where Q_t = the amount of drug released at time t and K_H = the Higuchi release rate.

Table 1. Release exponent and drug transport mechanism

Release exponent (n)	Drug transport mechanism
0.5	Fickian diffusion
$0.5 < n < 1.0$	Anomalous transport
1.0	Case-II transport
Higher than 1.0	Super Case-II transport

Formulation development of matrix floating tablets of Ciprofloxacin Hydrochloride

Table 2. Batch Codes for drugs and polymers

Drug and polymers	Batch Code
Ciprofloxacin Hydrochloride	C
HPMC K100M	H
Sodium Alginate	A
HPMC K ₁₀₀ M and Sodium Alginate combination	HA

Table 3. 3² full factorial design for the preparations of batches of HPMC K₁₀₀ M and Sodium Alginate

Formulation No	Factors in Coded form	
	HPMC K ₁₀₀ M	Sodium alginate

CHA₁	1	1
CHA₂	-1	1
CHA₃	0	1
CHA₄	0	-1
CHA₅	-1	0
CHA₆	1	-1
CHA₇	0	0
CHA₈	1	0
CHA₉	-1	-1

Table 4. Factors used and coded level for 3² full factorial designs

Factors used	Coded Level		
	-1	0	+1
HPMC K₁₀₀M (mg)	40	60	80
Sodium Alginate	15	30	45

Table 5. Composition of various floating matrix tablets of Ciprofloxacin HCl

Sl. No.	Ingredients (mg)	CHA₁	CHA₂	CHA₃	CHA₄	CHA₅	CHA₆	CHA₇	CHA₈	CHA₉
1	Ciprofloxacin	250	250	250	250	250	250	250	250	250

2	HPMC K₁₀₀ M	80	40	60	60	40	80	60	80	40
3	Sodium Alginate	45	45	45	15	30	15	30	30	15
4	Sod. bicarbonate	100	100	100	100	100	100	100	100	100
5	MCC	15	55	35	65	70	65	50	30	85
6	Talc	5	5	5	5	5	5	5	5	5
7	Mg.Sterate	5	5	5	5	5	5	5	5	5
Total Tablet Weight (mg)		500	500	500	500	500	500	500	500	500

Manufacturing procedure for Preparation of Ciprofloxacin Gastroretentive matrix tablet

Matrix embedded controlled release tablets of Ciprofloxacin were prepared by direct compression technique using various concentrations of HPCCK₁₀₀M and Sodium Alginate. All the ingredients were sieved through the 40 mesh screen and mixed. All ingredients except Magnesium stearate and talc were blended in glass mortar uniformly. After the sufficient mixing of drug as well as other components, Magnesium stearate and Talc were added and mixed for additional 2-3 minutes. Microcrystalline cellulose was used as directly compressible vehicle. Magnesium stearate was used as lubricant and Talc was used as glidant. Finally after proper mixing, the powder mixture was compressed on a 10 station tablet compression machine (rotary tableting machine, Rimek Minipress–I, India) using 12-mm punches.

Evaluation of Pre-Compression parameters ^[11]

Bulk Density

Both loose bulk density (LBD) and tapped bulk density (TBD) were determined. The loose bulk density is accurately weighted amount of sample (5 gm) was transferred into a 25 ml measuring cylinder carefully to read the unsettled apparent volume to the nearest graduated unit. The tapped bulk density is accurately weighted amount of sample (5 gm) was transferred into a 25 ml measuring cylinder. The measuring cylinder was then tapped 100 times on a plane hard wooden surface and measure the tapped volume to the nearest graduated unit. Calculate the loose bulk density and tapped bulk density in gm / ml by the following formula:

Loose bulk density (LBD) = Weight of granules / Apparent Volume

Tapped bulk density (TBD) = Weight of granules / Tapped volume

Compressibility Index

Percent compressibility of granules as determined by Carr's compressibility index is tapped bulk density minus loose bulk density divided by tapped bulk density.

Hausner Ratio

Hausner ratio is tapped bulk density divided by loose bulk density.

Angle of Repose (θ)

The frictional forces in a loose powder or granules can be measured by angle of repose. This is the maximum angle possible between the surface of a pile of powder or granules and the horizontal plane. A funnel was kept vertically in a stand at a specified height above a paper placed on a horizontal surface. The funnel bottom is closed and 10 gm of sample powder is filled in funnel. Then funnel was opened to release the powder on the paper to form a smooth conical heap, is found by measuring in different direction. The height of the heap was measured by using scale. The value of angle of repose are calculated by using the following formula, $\tan \theta = h/r$

$$\theta = \tan^{-1} (h/r)$$

Where

θ = Angle of repose,

h = Height of the heap and

r = Radius of the heap

Post-Compression Parameters ^[12, 13, 14]

Tablet Dimension

Thickness and diameter were measured using a calibrated screw gauge. Three tablets of each formulation were picked randomly and thickness was measured individually.

Hardness

Hardness indicates the ability of a tablet to withstand mechanical shocks while handling the hardness of the tablets was determined using Monsanto hardness tester. It is expressed in Kg/cm². Three tablets were randomly selected and hardness of the tablets was determined.

Friability Test

The friability of tablets was determined using Roche friabilator. It is expressed in percentage (%). Ten tablets were initially weighed (W_{initial}) and transferred into friabilator. The friabilator was operated 25rpm for 4minutes or run up to 100 revolutions. The tablets were weighed again (W_{final}). The percentage friability was then calculated.

Uniformity in Weight

Twenty tablets were selected randomly from each batch and weighed. Weight of each tablet was recorded with the help of digital balance. The readings were recorded and tabulated.

In vitro Buoyancy Studies

The time between introduction of dosage forms and its buoyancy in the simulated gastric fluid and the time during which the dosage form remain buoyant were measured. The time taken for dosage form to emerge on surface of medium called total lag time (TLT) or buoyancy lag time (BLT) and the total duration of time by which dosage form remain buoyant is called total floating time.

In-vitro Drug Release Studies ^[15, 16, 17]

Three tablets of each formulation were used in the release experiment. In-vitro drug release of tablets was studied using USP type II apparatus at $37\pm 0.5^{\circ}\text{C}$ in 900ml 0.1N HCl solution (pH; 1.2) with a speed of 50 rpm. At appropriate time intervals 5ml of sample was withdrawn and an equal volume of medium was added to maintain the volume constant. Samples were analyzed by using UV- Visible Spectrophotometer at 276nm. The dissolution data obtained were plotted as percent cumulative drug release versus time.

RESULTS AND DISCUSSION

Identification of drugs

The received gift samples of Ciprofloxacin were characterized by Infrared (IR) Spectroscopy, melting point determination and ultraviolet (UV) spectroscopy.

Infrared (IR) spectra

The IR spectra of the drugs were recorded by using FT-IR (DRS) technique. The spectrum showed peaks corresponding to the functional groups present in the drug structure.

Melting point

The melting point of the drug sample Ciprofloxacin was found to be 147⁰C and 190⁰C respectively that comply with the reference data.

Ultraviolet (UV) spectroscopy

In UV scanning from standard solutions of Ciprofloxacin, the wavelength of maximum absorption (λ_{\max}) was determined at 0.1N HCl. It was found to be 276nm in 0.1N HCl for Ciprofloxacin which are similar to the values given in literature.

Drug-polymer compatibility study

Interaction between the drug and added excipients plays a vital role in establishing stability of the formulation. Hence, the drug-excipient compatibility study is highly desirable before developing any formulation. Interaction between drug and excipient can occur by means of several mechanisms like adsorption, complexation, chemical interaction, pH effect, eutectic formation resulting in drug products with desired or undesired properties.

Fourier-Transform Infrared Spectroscopy

Fourier-transform infrared (DRS) spectra were obtained by using an FT IR-Affinity-1 spectrophotometer (DRS-8000) SHIMADZU, Japan. The drug sample (Ciprofloxacin) was previously ground and mixed thoroughly with potassium bromide, an infrared transparent matrix, at 1:1 (Sample: KBr) ratio, respectively. The KBr powder was used as blank for background correction in FT-IR studies. Forty five scans were obtained at a resolution of 4 cm^{-1} from 4000 to 400 cm^{-1} .

SHIMADZU

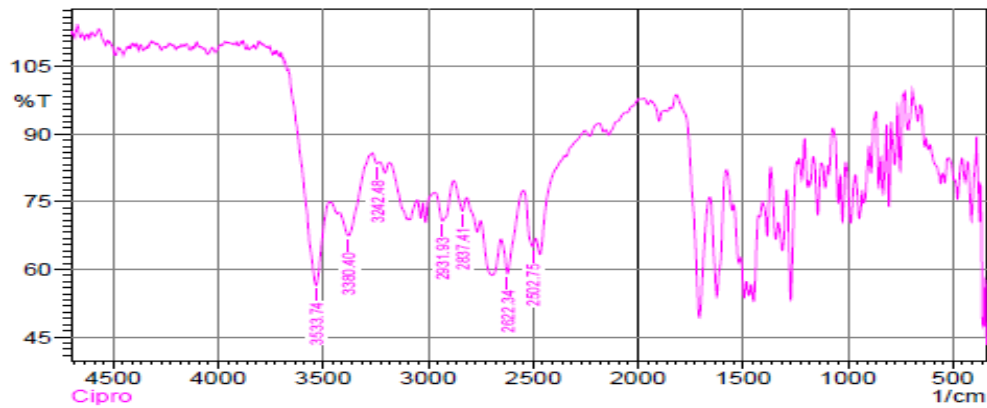


Figure 1: FTIR Spectra of Ciprofloxacin HCl

SHIMADZU

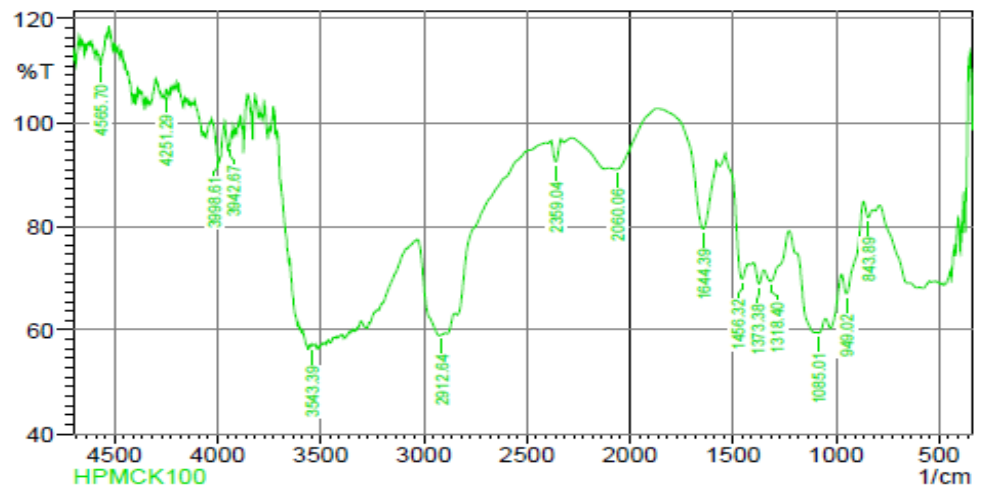


Figure 2: FTIR Spectra of HPMC K₁₀₀ M

SHIMADZU

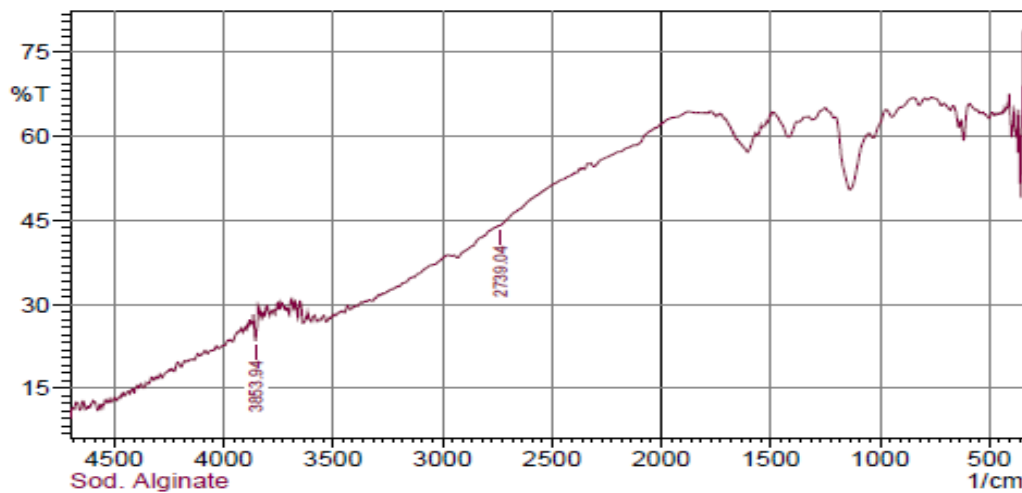


Figure 3: FTIR Spectra of Sodium Alginate

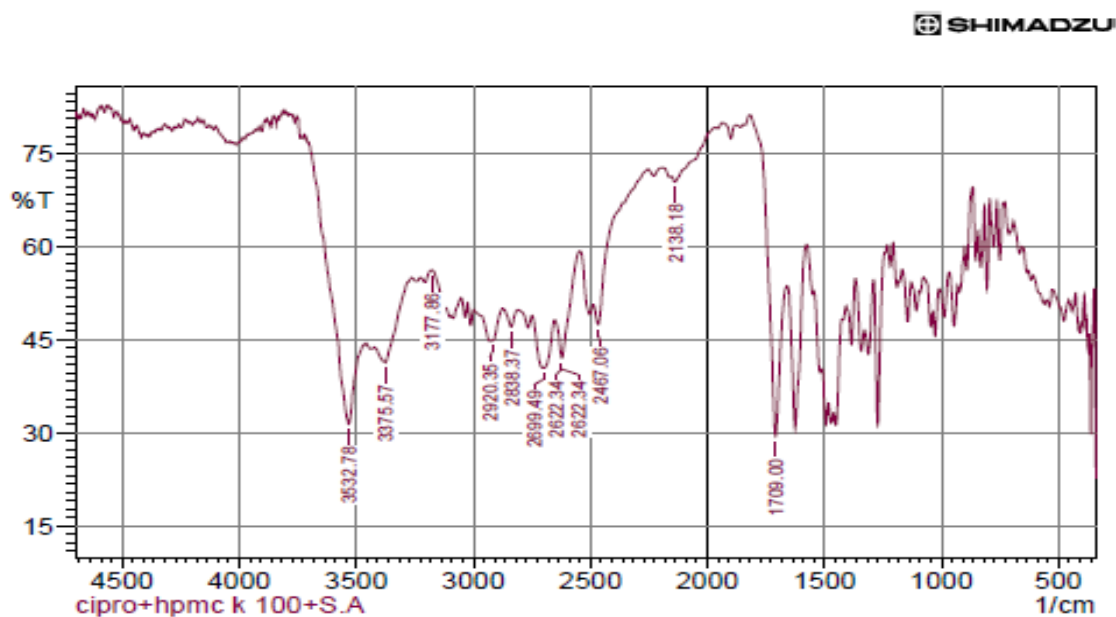


Figure 4: FTIR Spectra of Ciprofloxacin with HPMC K₁₀₀M and Sodium Alginate

Differential Scanning Calorimetry

The interactions between drugs and a distinct mixture [1:1] were then investigated by DSC. Interactions in the sample are derived or deduced from DSC by changes in the thermal events, such as elimination of an endothermic or exothermic peak, or appearance of a new peak. However, some broadening of peaks leading to changes in the area, onset of peak, and changes in peak temperature occur simply due to mixing of the components without indicating any significant interaction.

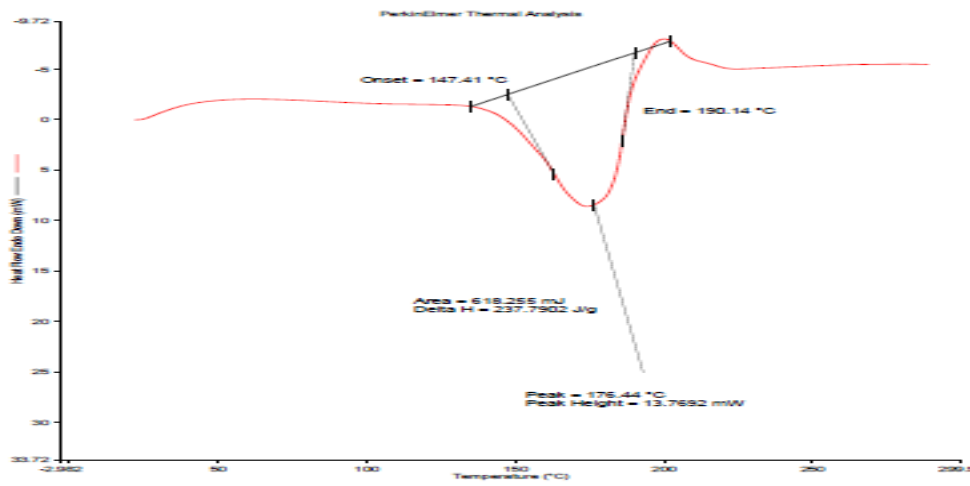


Figure 5: DSC thermogram of Ciprofloxacin HCl

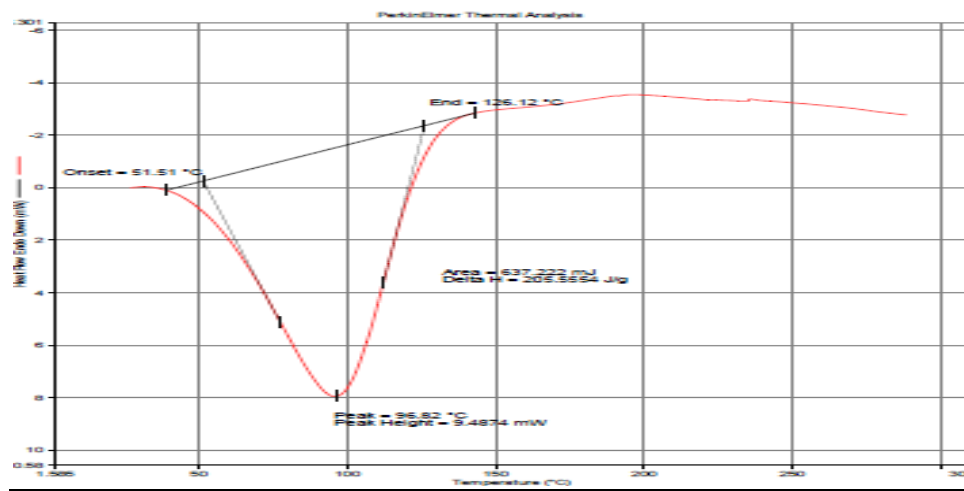


Figure 6: DSC thermogram of HPMC K₁₀₀ M

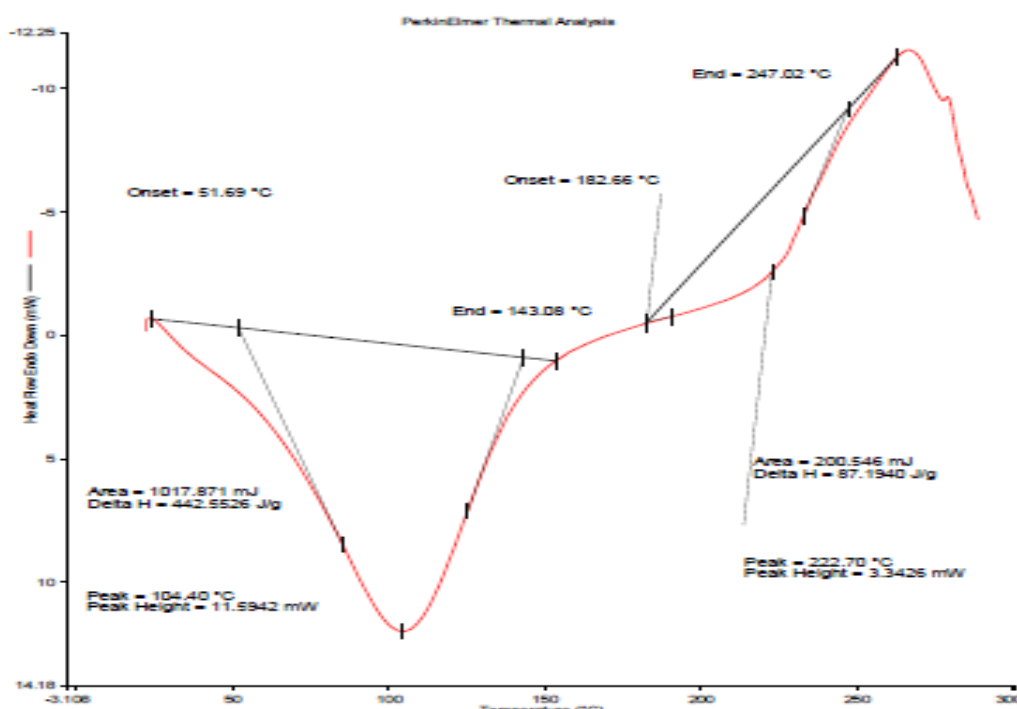


Figure 7: DSC thermogram of Sodium Alginate

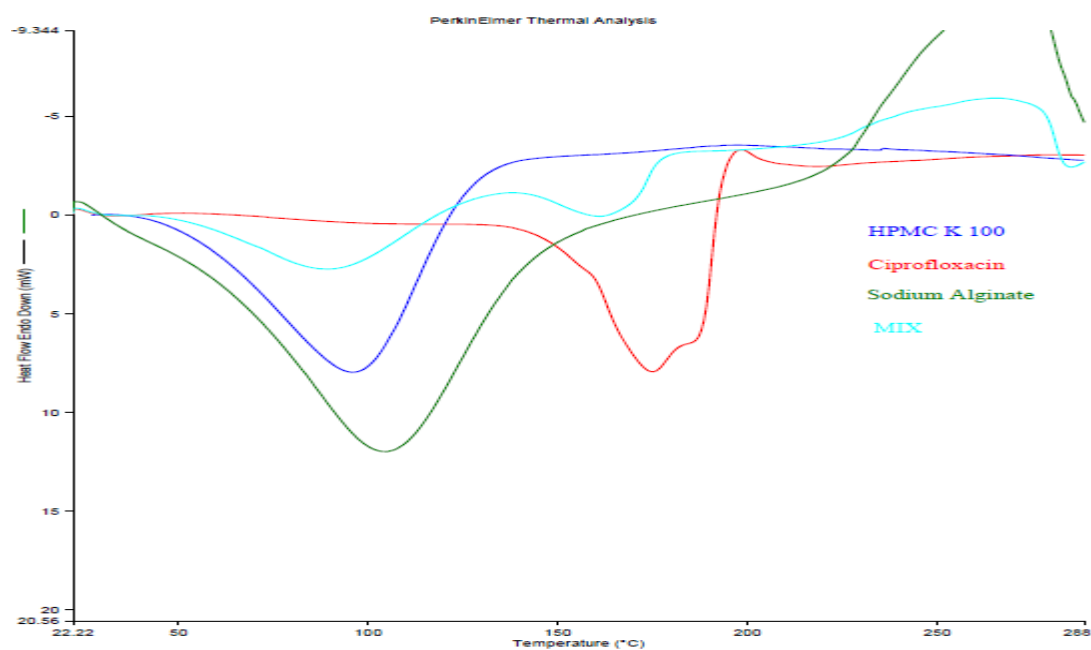


Figure 8: DSC thermogram of Overlay spectra of HPMC K₁₀₀, Ciprofloxacin, Sodium Alginate and Mixture

Analytical method development

UV-Vis Spectrophotometric Method Development for Ciprofloxacin HCl

Serial dilution of Ciprofloxacin was prepared in 0.1 N HCl from 2µg/mL to 10µg/mL and scanned for absorption maxima (λ_{max}) in the range of 200 to 400nm.

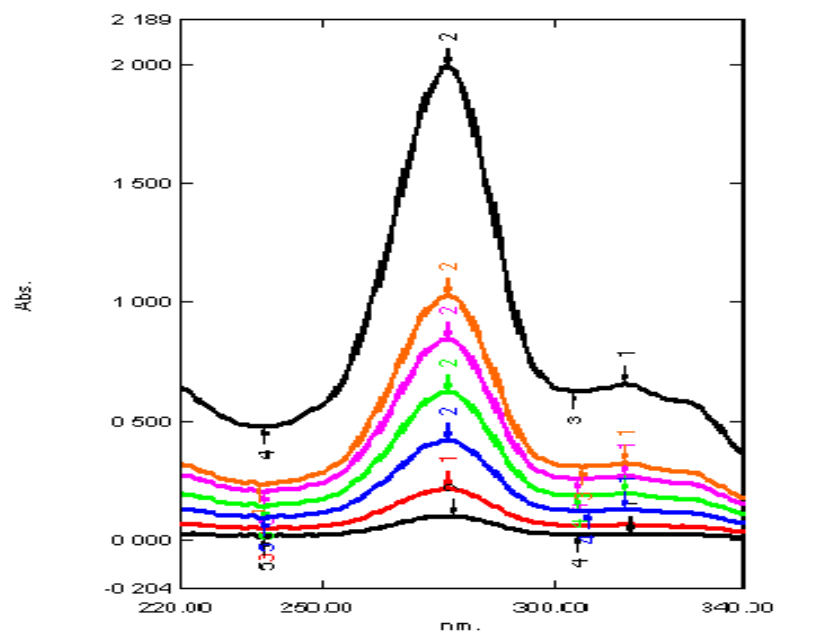


Figure 9: Overlay Spectra of Ciprofloxacin in 0.1N HCl

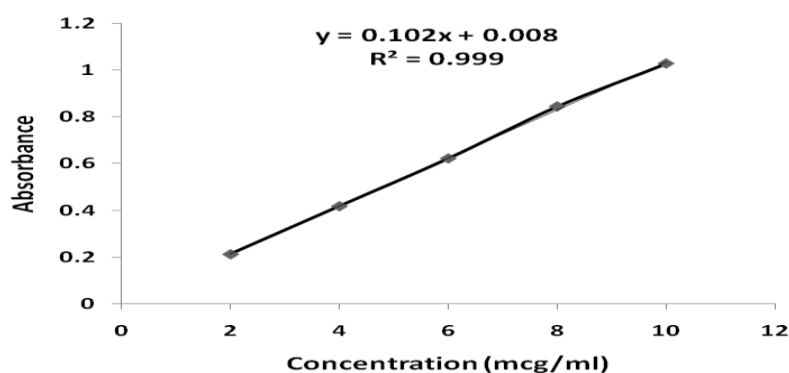


Figure 10: Calibration Curve of Ciprofloxacin HCl in 0.1N HCl

Formulation development and evaluation of Ciprofloxacin Gastroretentive matrix tablets

Table 6. Physical Parameters of Ciprofloxacin Tablet formulations CHA₁ to CHA₉

Blend Parameters	Batches								
	CHA ₁	CHA ₂	CHA ₃	CHA ₄	CHA ₅	CHA ₆	CHA ₇	CHA ₈	CHA ₉
Bulk Density (gm/ml)	0.616	0.534	0.513	0.452	0.481	0.482	0.572	0.513	0.581
Tapped Density (gm/ml)	1.153	0.616	0.581	0.604	0.621	0.594	1.14	0.581	1.133
Carr's Compressibility (%)	0.534	13.31	11.8	25.65	22.54	18.9	0.502	11.8	0.513
Hausner's Ratio	0.581	1.153	1.133	1.336	1.291	1.23	0.616	1.133	0.604
Tablet Parameters									
Weight Variation (mg)	513 ± 5.3	503 ± 5.27	500 ± 5.22	509 ± 5.23	503 ± 5.27	498 ± 5.22	501 ± 5.23	506 ± 5.32	504 ± 5.26
Hardness (kg/cm ²)	5.7±0.3 2	6.1±0.7 1	5.7±0.5 2	5.5±0.5 4	6.3±0.5 4	5.8±0.5 3	5.7±0.2 3	5.7±0.5 2	5.7±0.2 6
Friability (%)	0.73	0.68	0.6	0.74	0.52	0.61	0.90	0.66	0.52
Drug Content	96.43	99.56	98.2	99.48	99.53	98.72	98.2	98.2	99.53

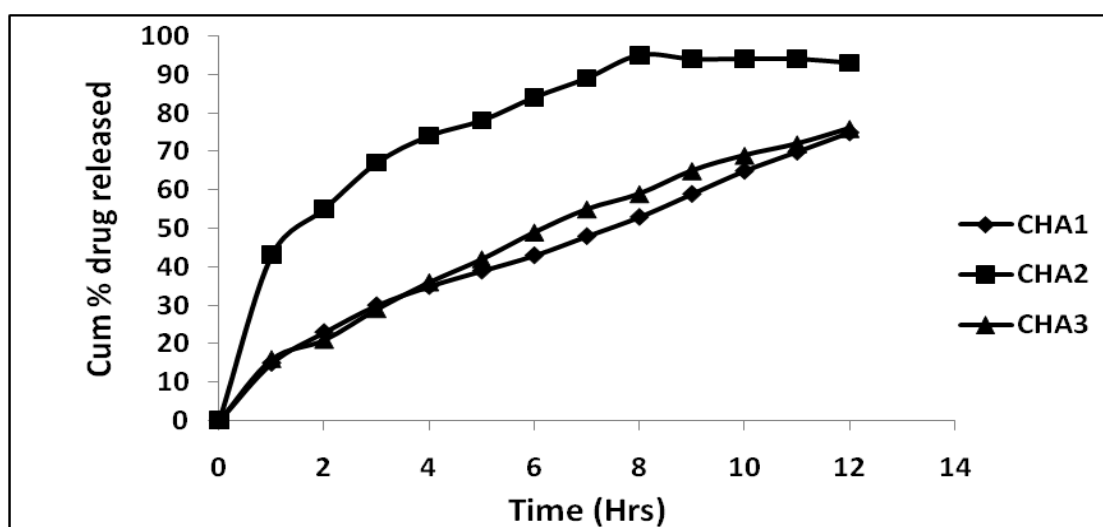


Figure 11: Dissolution curve of Ciprofloxacin Tablets from CHA₁ to CHA₃

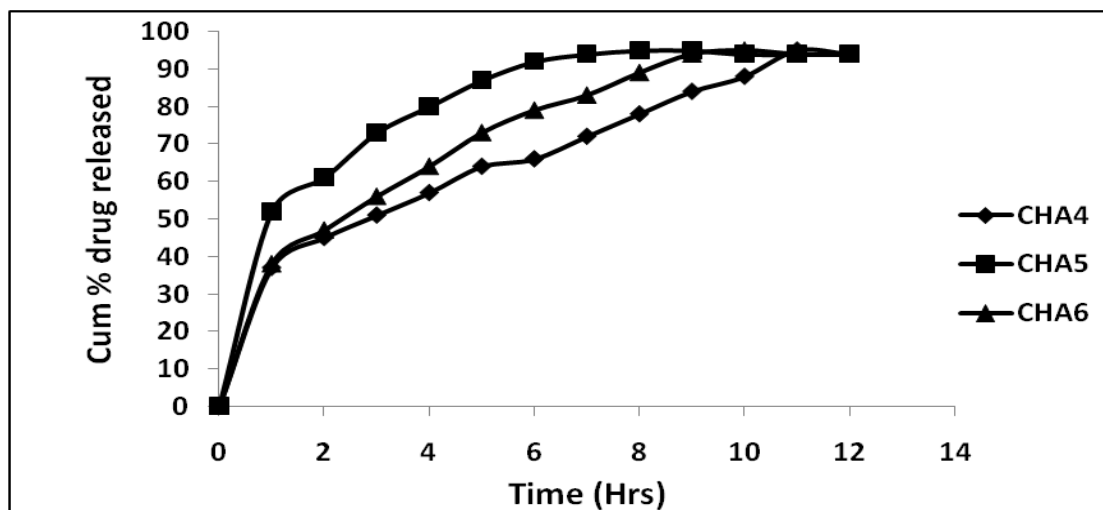


Figure 12: Dissolution curve of Ciprofloxacin Tablets from CHA₄ to CHA₆

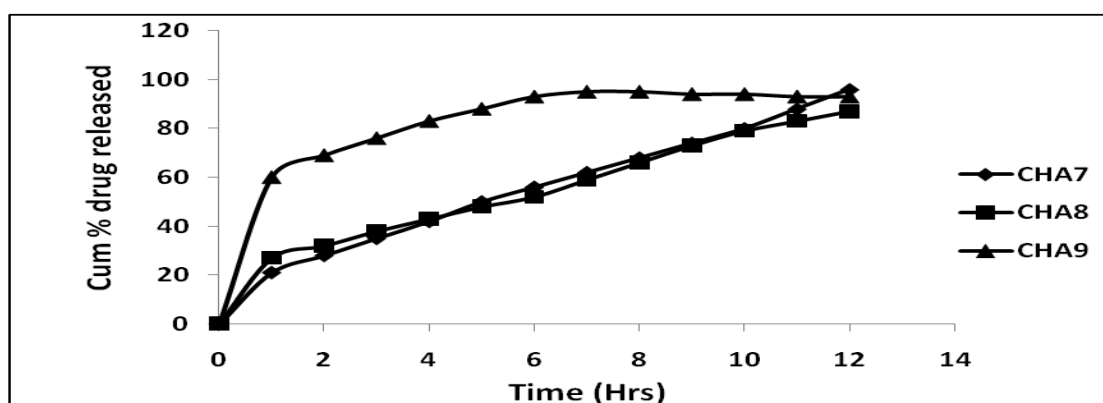


Figure 13: Dissolution curve of Ciprofloxacin Tablets from CHA₇ to CHA₉

Table 7. Kinetic Analysis of Dissolution profile of Ciprofloxacin from CHA₁ to CHA₉

Models	CHA ₁	CHA ₂	CHA ₃	CHA ₄	CHA ₅	CHA ₆	CHA ₇	CHA ₈	CHA ₉
--------	------------------	------------------	------------------	------------------	------------------	------------------	------------------	------------------	------------------

Peppas Model	n	0.635	0.327	0.668	0.396	0.255	0.401	0.623	0.500	0.190
	R²	0.993	0.964	0.991	0.980	0.928	0.984	0.987	0.958	0.918
	K_p	14.62	45.08	14.55	34.43	54.07	37.15	18.79	23.28	61.94
Higuchi Model	R²	0.961	0.882	0.964	0.982	0.761	0.964	0.959	0.976	0.626
	K_h	19.40	31.82	20.63	28.07	33.09	30.47	24.48	23.68	33.45
Zero- Order	R²	0.929	0.170	0.928	0.620	-0.18	0.498	0.934	0.852	-0.52
	K₀	6.7	10.55	7.121	9.478	10.88	10.22	8.461	8.113	10.93
First- Order	R²	0.970	0.884	0.995	0.914	0.818	0.950	0.837	0.947	0.727
	K₁	0.104	0.228	0.115	0.223	0.211	0.253	0.219	0.154	0.176

Table 8. Factorial design of various polymer concentrations of HPMC K₁₀₀ and Sodium Alginate

Std	Run	Block	Factor 1 A:X1 HPMC K100 mg	Factor 2 B:X2 Sod Alginate mg	Response 1 Y1 % Release	Response 2 Y6 % Release	Response 3 Y12 % Release
4	1	Block 1	80.00	45.00	15	43	75
3	2	Block 1	40.00	45.00	43	84	93
8	3	Block 1	60.00	45.00	16	49	76
7	4	Block 1	60.00	15.00	37	66	94
5	5	Block 1	40.00	30.00	52	92	94
2	6	Block 1	80.00	15.00	38	79	94
9	7	Block 1	60.00	30.00	21	56	96
6	8	Block 1	80.00	30.00	27	52	87
1	9	Block 1	40.00	15.00	60	93	93

Anova for Response surface cubic model of HPMC K₁₀₀ and Sodium Alginate (Y1)

Response: Y1

ANOVA for Response Surface Reduced Cubic Model

Analysis of variance table [Partial sum of squares]

Source	Sum of Squares	DF	Mean Square	F Value	Prob > F
Model	1992.00	7	284.57	17.79	0.1806
A	312.50	1	312.50	19.53	0.1417
B	220.50	1	220.50	13.78	0.1675
A ²	420.50	1	420.50	26.28	0.1226
B ²	4.50	1	4.50	0.28	0.6896
AB	9.00	1	9.00	0.56	0.5903
A ² B	0.33	1	0.33	0.021	0.9087
AB ²	0.000	1	0.000	0.000	1.0000
Residual	16.00	1	16.00		
Cor Total	2008.00	8			

Std. Dev.	4.00	R-Squared	0.9920
Mean	34.33	Adj R-Squared	0.9363
C.V.	11.65	Pred R-Squared	-0.4522
PRESS	2916.00	Adeq Precisor	12.198

Factor	Coefficient		Standard Error	95% CI		VIF
	Estimate	DF		Low	High	
Intercept	23.67	1	2.98	-14.22	61.55	
A-X1 HPMC K100	-12.50	1	2.83	-48.44	23.44	3.00
B-X2 Sod Alginate	-10.50	1	2.83	-46.44	25.44	3.00
A ²	14.50	1	2.83	-21.44	50.44	1.00
B ²	1.50	1	2.83	-34.44	37.44	1.00
AB	-1.50	1	2.00	-26.91	23.91	1.00
A ² B	0.50	1	3.46	-43.52	44.52	3.00
AB ²	0.000	1	3.46	-44.02	44.02	3.00

Final Equation in Terms of Coded Factors:

$$\begin{aligned}
 Y1 = & \\
 & +23.67 \\
 & -12.50 * A \\
 & -10.50 * B \\
 & +14.50 * A^2 \\
 & +1.50 * B^2 \\
 & -1.50 * A * B \\
 & +0.50 * A^2 * B
 \end{aligned}$$

+0.000 * A * B²

Final Equation in Terms of Actual Factors:

$$\begin{aligned}
 Y_1 = & +200.66667 \\
 & -4.52500 * X_1 \text{ HPMC K100} \\
 & -0.50000 * X_2 \text{ Sod Alginate} \\
 & +0.033750 * X_1 \text{ HPMC K100}^2 \\
 & +6.66667E-003 * X_2 \text{ Sod Alginate}^2 \\
 & -0.015000 * X_1 \text{ HPMC K100} * X_2 \text{ Sod Alginate} \\
 & +8.33333E-005 * X_1 \text{ HPMC K100}^2 * X_2 \text{ Sod Alginate} \\
 & -5.98255E-019 * X_1 \text{ HPMC K100} * X_2 \text{ Sod Alginate}^2
 \end{aligned}$$

Diagnostics Case Statistics

Standard Order	Actual Value	Predicted Value	Residual	Leverage	Student Residual	Cook's Distance	Outlier t	Run Order
1	60.00	60.67	-0.67	0.972	-1.000	4.375	0.000	9
2	38.00	38.67	-0.67	0.972	-1.000	4.375	0.000	6
3	43.00	43.67	-0.67	0.972	-1.000	4.375	0.000	2
4	15.00	15.67	-0.67	0.972	-1.000	4.375	0.000	1
5	52.00	50.67	1.33	0.889	1.000	1.000	0.000	5
6	27.00	25.67	1.33	0.889	1.000	1.000	0.000	8
7	37.00	35.67	1.33	0.889	1.000	1.000	0.000	4
8	16.00	14.67	1.33	0.889	1.000	1.000	0.000	3
9	21.00	23.67	-2.67	0.556	-1.000	0.156	0.000	7

DESIGN-EXPERT Plot

Y1

X = A: X1 HPMC K100

Y = B: X2 Sod Alginate

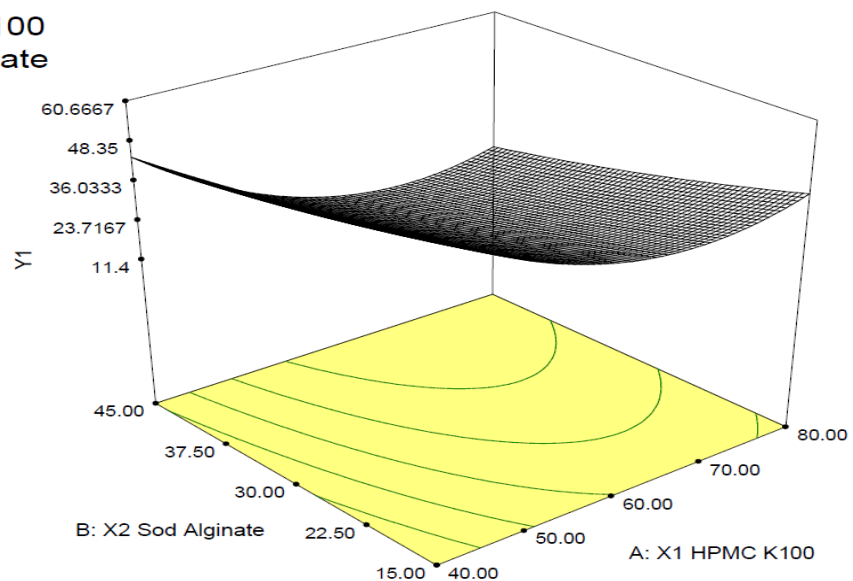


Figure 14: Surface design of response Y1% by varying quantities of HPMC K₁₀₀M and Sodium Alginate

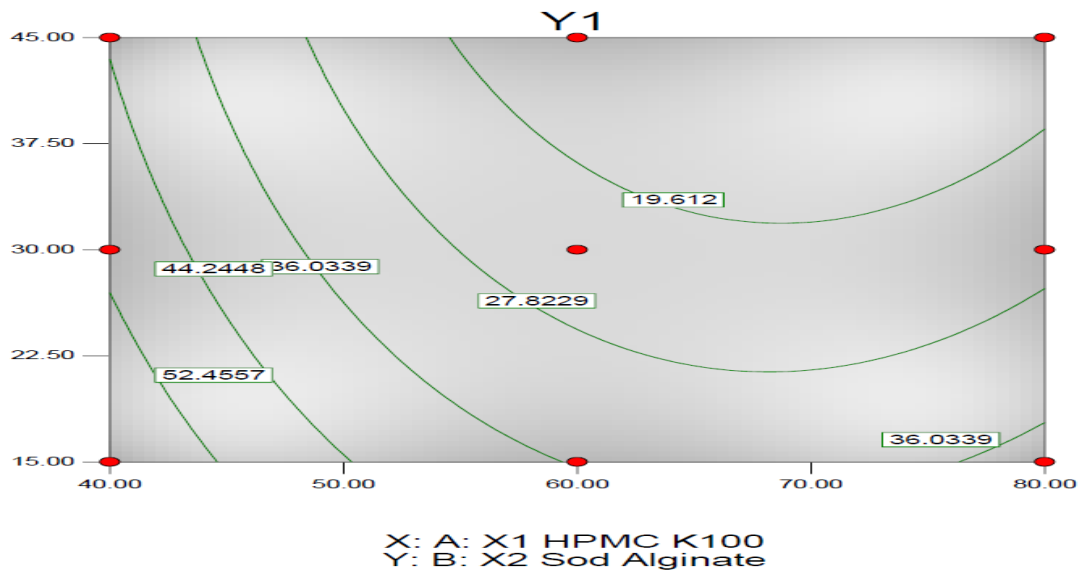


Figure 15: Related contour plot indicating various levels of the two polymers

Anova for Response surface cubic model of HPMC K₁₀₀ and Sod.alginate (Y6)

Response: Y6

ANOVA for Response Surface Reduced Cubic Model

Analysis of variance table [Partial sum of squares]

Source	Sum of Squares	DF	Mean Square	F Value	Prob > F
Model	2966.86	7	423.84	610.33	0.0312
A	800.00	1	800.00	1152.00	0.0188
B	144.50	1	144.50	208.08	0.0441
A ²	566.72	1	566.72	816.08	0.0223
B ²	10.89	1	10.89	15.68	0.1575
AB	182.25	1	182.25	262.44	0.0392
A ² B	10.08	1	10.08	14.52	0.1634
AB ²	52.08	1	52.08	75.00	0.0732
Residual	0.69	1	0.69		
Cor Total	2967.56	8			

Std. Dev.	0.83	R-Squared	0.9998
Mean	68.22	Adj R-Squared	0.9981
C.V.	1.22	Pred R-Squared	0.9574
PRESS	126.56	Adeq Precisor	63.640

Factor	Coefficient		Standard Error	95% CI		VIF
	Estimate	DF		Low	High	
Intercept	55.44	1	0.62	47.55	63.34	
A-X1 HPMC K100	-20.00	1	0.59	-27.49	-12.51	3.00
B-X2 Sod Alginate	-8.50	1	0.59	-15.99	-1.01	3.00
A ²	16.83	1	0.59	9.35	24.32	1.00
B ²	2.33	1	0.59	-5.15	9.82	1.00
AB	-6.75	1	0.42	-12.04	-1.46	1.00
A ² B	-2.75	1	0.72	-11.92	6.42	3.00
AB ²	6.25	1	0.72	-2.92	15.42	3.00

Final Equation in Terms of Coded Factors:

$$\begin{aligned}
 Y6 = & \\
 & +55.44 \\
 & -20.00 * A \\
 & -8.50 * B \\
 & +16.83 * A^2 \\
 & +2.33 * B^2 \\
 & -6.75 * A * B \\
 & -2.75 * A^2 * B
 \end{aligned}$$

$$+6.25 * A * B^2$$

Final Equation in Terms of Actual Factors:

$$\begin{aligned}
 Y_6 = & \\
 & +227.27778 \\
 & -5.77500 * X_1 \text{ HPMC K100} \\
 & +3.51111 * X_2 \text{ Sod Alginate} \\
 & +0.055833 * X_1 \text{ HPMC K100}^2 \\
 & -0.072963 * X_2 \text{ Sod Alginate}^2 \\
 & -0.050833 * X_1 \text{ HPMC K100} * X_2 \text{ Sod Alginate} \\
 & -4.58333\text{E-}004 * X_1 \text{ HPMC K100}^2 * X_2 \text{ Sod Alginate} \\
 & +1.38889\text{E-}003 * X_1 \text{ HPMC K100} * X_2 \text{ Sod Alginate}^2
 \end{aligned}$$

Diagnostics Case Statistics

Standard Order	Actual Value	Predicted Value	Residual	Leverage	Student Residual	Cook's Distance	Outlier t	Run Order
1	93.00	92.86	0.14	0.972	1.000	4.375	0.000	9
2	79.00	78.86	0.14	0.972	1.000	4.375	0.000	6
3	84.00	83.86	0.14	0.972	1.000	4.375	0.000	2
4	43.00	42.86	0.14	0.972	1.000	4.375	0.000	1
5	92.00	92.28	-0.28	0.889	-1.000	1.000	0.000	5
6	52.00	52.28	-0.28	0.889	-1.000	1.000	0.000	8
7	66.00	66.28	-0.28	0.889	-1.000	1.000	0.000	4
8	49.00	49.28	-0.28	0.889	-1.000	1.000	0.000	3
9	56.00	55.44	0.56	0.556	1.000	0.156	0.000	7

DESIGN-EXPERT Plot

Y6
 X = A: X1 HPMC K100
 Y = B: X2 Sod Alginate

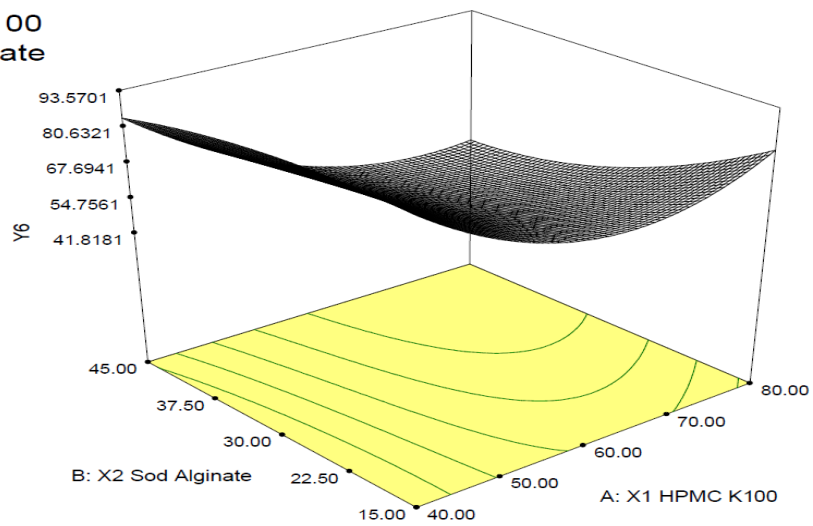


Figure 16: Surface design of response Y6% by varying quantities of HPMC K₁₀₀M and Sod.alginate

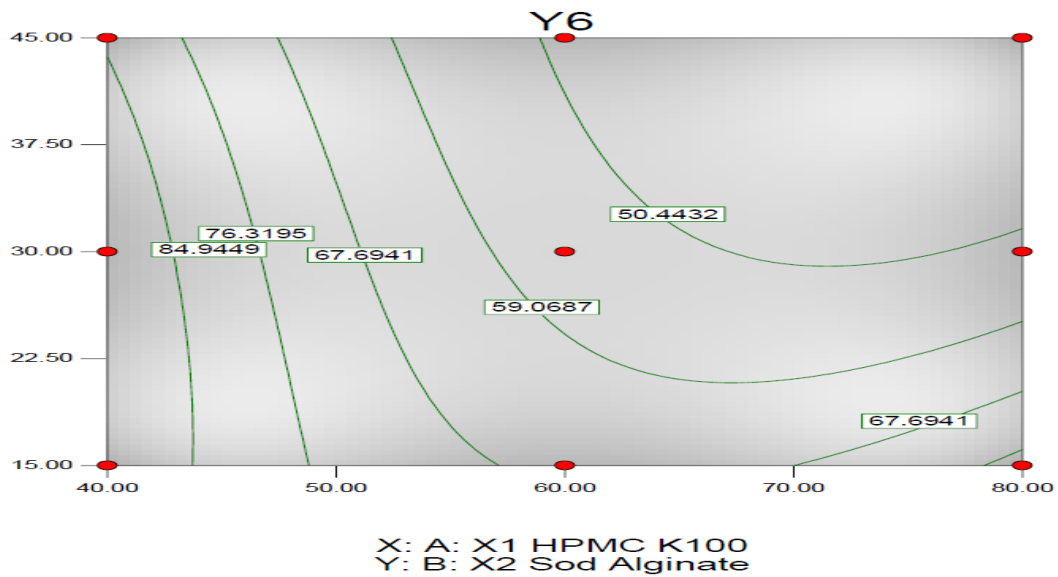


Figure 17: Related contour plot indicating various levels of the two polymers

Anova for Response surface cubic model of HPMC K₁₀₀ and Sod.alginate (Y12)

Response: Y12

ANOVA for Response Surface Reduced Cubic Model

Analysis of variance table [Partial sum of squares]

Source	Sum of Squares	DF	Mean Square	F Value	Prob > F
Model	486.86	7	69.55	1.83	0.5163
A	24.50	1	24.50	0.64	0.5694
B	162.00	1	162.00	4.26	0.2872
A ²	0.89	1	0.89	0.023	0.9034
B ²	46.72	1	46.72	1.23	0.4673
AB	90.25	1	90.25	2.37	0.3665
A ² B	24.08	1	24.08	0.63	0.5721
AB ²	0.75	1	0.75	0.020	0.9112
Residual	38.03	1	38.03		
Cor Total	524.89	8			

Std. Dev.	6.17	R-Squared	0.9276
Mean	89.11	Adj R-Squared	0.4204
C.V.	6.92	Pred R-Squared	-12.2039
PRESS	6930.56	Adeq Precisor	3.798

Factor	Coefficient Estimate	DF	Standard Error	95% CI Low	95% CI High	VIF
Intercept	91.89	1	4.60	33.49	150.29	
A-X1 HPMC K100	-3.50	1	4.36	-58.91	51.91	3.00
B-X2 Sod Alginate	-9.00	1	4.36	-64.41	46.41	3.00
A ²	0.67	1	4.36	-54.74	56.07	1.00
B ²	-4.83	1	4.36	-60.24	50.57	1.00
AB	-4.75	1	3.08	-43.93	34.43	1.00
A ² B	4.25	1	5.34	-63.61	72.11	3.00
AB ²	-0.75	1	5.34	-68.61	67.11	3.00

Final Equation in Terms of Coded Factors:

$$\begin{aligned}
 Y12 = & \\
 & +91.89 \\
 & -3.50 * A \\
 & -9.00 * B \\
 & +0.67 * A^2 \\
 & -4.83 * B^2 \\
 & -4.75 * A * B \\
 & +4.25 * A^2 * B
 \end{aligned}$$

$$-0.75 * A * B^2$$

Final Equation in Terms of Actual Factors:

$$\begin{aligned}
 Y_{12} = & \\
 & +11.05556 \\
 & +2.50000 * X1 \text{ HPMC K100} \\
 & +3.58889 * X2 \text{ Sod Alginate} \\
 & -0.019583 * X1 \text{ HPMC K100}^2 \\
 & -0.011481 * X2 \text{ Sod Alginate}^2 \\
 & -0.090833 * X1 \text{ HPMC K100} * X2 \text{ Sod Alginate} \\
 & +7.08333\text{E-}004 * X1 \text{ HPMC K100}^2 * X2 \text{ Sod Alginate} \\
 & -1.66667\text{E-}004 * X1 \text{ HPMC K100} * X2 \text{ Sod Alginate}^2
 \end{aligned}$$

Diagnostics Case Statistics

Standard Order	Actual Value	Predicted Value	Residual	Leverage	Student Residual	Cook's Distance	Outlier t	Run Order
1	93.00	91.97	1.03	0.972	1.000	4.375	0.000	9
2	94.00	92.97	1.03	0.972	1.000	4.375	0.000	6
3	93.00	91.97	1.03	0.972	1.000	4.375	0.000	2
4	75.00	73.97	1.03	0.972	1.000	4.375	0.000	1
5	94.00	96.06	-2.06	0.889	-1.000	1.000	0.000	5
6	87.00	89.06	-2.06	0.889	-1.000	1.000	0.000	8
7	94.00	96.06	-2.06	0.889	-1.000	1.000	0.000	4
8	76.00	78.06	-2.06	0.889	-1.000	1.000	0.000	3
9	96.00	91.89	4.11	0.556	1.000	0.156	0.000	7

DESIGN-EXPERT Plot

Y12
 X = A: X1 HPMC K100
 Y = B: X2 Sod Alginate

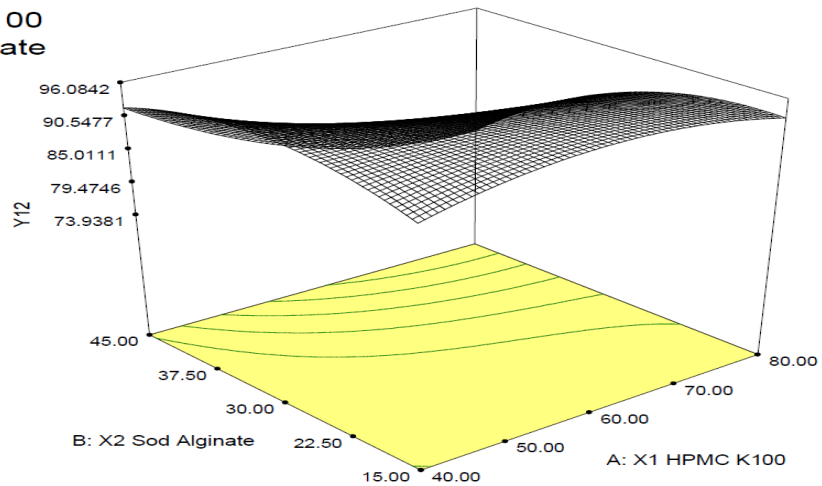


Figure 18: Surface design of response Y12% by varying quantities of HPMC K₁₀₀M and Sod.alginate.

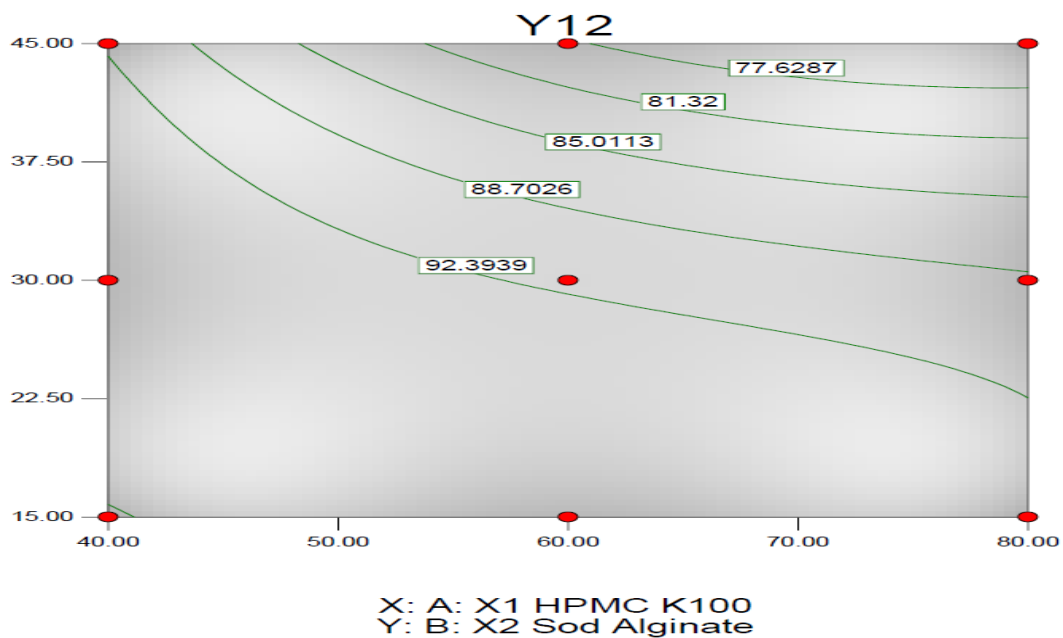


Figure 19: Related contour plot indicating various levels of the two polymers

SUMMARY AND CONCLUSION

The oral floating matrix tablets of Ciprofloxacin Hydrochloride were formulated by Experimental design by using HPMC K₁₀₀M and Sodium Alginate as the retardant polymers each with three different levels with an approach to increase gastric residence and thereby improve drug bioavailability. Floating Matrix tablets were prepared by direct compression method and prepared tablets were evaluated for weight variation, percentage friability, hardness and drug content studies. All the formulations showed compliance with pharmacopeia standards. Floating lag times of all the formulations were within 1 minute and total floating time of all the formulations were more than 12 hours. In vitro release studies revealed that the release rate decreased with increase polymer proportion of retarding polymers. The formulations CHA₇ (12% HPMC K₁₀₀M and 6% SA) sustained release of drug for 12 hrs with 21% release of drug after 1hr, 50% release of drug after 6hr and 96% at the end of 12 hrs. From the Kinetic model it was found that the optimized formulation CHA₇ showed linearity in case of Zero order (R^2 : 0.934) and Higuchi model (R^2 : 0.959). By fitting data to Korsmeyer-Peppas model and 'n' value lying above 0.5 indicating non Fickian release. It can be concluded that stable formulation could be developed by incorporating in a definite proportion of HPMC K₁₀₀M and Sodium Alginate, along with definite amount of gas generating agent (Sodium bicarbonate), So that oral Gastroretentive floating matrix profile is maintained for an extended periods of time.

ACKNOWLEDGEMENTS

The authors are thankful to Royal College of Pharmacy & Health Sciences, Berhampur, Odisha, and all authors for providing required facilities to carry out this research work.

REFERENCES

1. Priyanka V, Reddy PSC, Sowmya C, Singh RK. Review article floating tablet and it's technology. *Int J Pharma Drug Anal* 2014; 2(8): 653-657.
2. Kataria S, Middha A, Bhardwaj S, Sandhu P. Floating drug delivery system a review. *Int Res J of pharmacy* 2011; 2(9): 18-24.
3. Venketasurlu K, Jami KP, Badithala SSK. Floating drug delivery system of ciprofloxacin HCl. *Asian J Pharma* 2016; 10(4): 271-278.

4. Abbas N, Ahsan M, Hussain A, Saeed H, Shah PA, Mohammad S, Arshad MS. Formulation Optimization and In-vitro Evaluation of Oral Floating Captopril Matrix Tablets using Factorial Design. *Tropical J Pharma Res* 2015; 14(10): 1737-1748.
5. Costa P, Sousa Lobo JM. Modeling and comparison of dissolution profiles. *Eu J Pharma Sci* 2001; 13: 123–133.
6. Varshosaz J, Tavakoli N, Kheirollahi F. Use of hydrophilic natural gums in formulation of sustained-release matrix tablets of tramadol hydrochloride. *AAPS Pharm Sci Tech*. 2006; 7(1): E1-E7.
7. Shoaib MH, Tazeen J, Merchant HA, Yousuf RI. Evaluation of drug release kinetics from Ibuprofen matrix tablets using HPMC. *Pak J Pharm Sci* 2006; 19(2): 119-124.
8. Devarajan K, Rangasamy M, Selvaraj J and Natesan SK. Development and evaluation of floating tablets of ciprofloxacin Hcl. *Int. journal of pharm and allied sciences archive* 2012 april-june; 1(1):17-25.
9. Reddy KR, Mutalik S, Reddy S. Once-daily sustained-release matrix tablets of Nicorandil: Formulation and in vitro evaluation. *AAPS Pharm Sci Tech* 2003; 4 (4): 1-9.
10. Khemariya P, Jain AK, Bhargava M, Singhai SK, Goswami S, Goswami R. Preparation and in-vitro evaluation of sustained-release matrix tablets of Diltiazem. *Int J Adv Pharm Sci* 2010; 1: 267-273.
11. Boddeda A, Gade L, Moogala S, Gottumukkala VS, Sharma J, Kashmiri MA, et al. Formulation and evaluation of floating matrix tablets of ciprofloxacin HCl. *J Drug Deliv Ther*. 2020;10(1-s):136-47.
12. Nadendla RR. Formulation and in vitro evaluation of gastroretentive floating tablets of ciprofloxacin HCl. *Int J Pharm Sci Rev Res*. 2016;39(1):133-9.
13. Satpute SY, Hashemi SA, Hatefi A. Statistical optimization of floating drug delivery system based on cross-linked polymers for ciprofloxacin solubility enhancement using central composite design. *J Mol Liq*. 2016;224:621-33.
14. Pandey D, Patil VV, Kulkarni A, Shelke S, Choudhari PK, Kale UB, Jadhav VB. Controlled release delivery system of ciprofloxacin using sustain release matrix tablet. *J Drug Deliv Ther*. 2017;7(5):26-31.

15. Chand N, Khan MS, Khan RA, Khan NR. Development and characterization of gastroretentive floating tablets of ciprofloxacin for eradication of *Helicobacter pylori*. *J Drug Deliv Ther.* 2016;6(5):44-56.
16. Choudhury PK, Kar M, Chauhan CS. Preparation and evaluation of gastroretentive floating tablets of ciprofloxacin. *Int J Pharm Sci Res.* 2018;9(8):3178-92.
17. Vanshiv SD, Satyanarayan M, Satish CS, Abdul H. Formulation and evaluation of gastroretentive drug delivery of ciprofloxacin by using natural polymers. *Int J Pharm Pharm Sci.* 2016;8(5):214-21.